



75-77 GRIGGS ROAD, BROOKLINE
FRONT ELEVATION
JUNE 1, 2020

DAI
1/8" = 1'-0"

UNIT #1 (SECOND FLOOR) - 3,013 SQ. FT.
UNIT #2 (THIRD FLOOR) - 3,013 SQ. FT.

THE RESIDENCES
AT GRIGGS PARK



75-77 GRIGGS ROAD, BROOKLINE
LEFT SIDE ELEVATION
JUNE 1, 2020

DAI
1/8" = 1'-0"

UNIT #1 (SECOND FLOOR) - 3,013 SQ. FT.
UNIT #2 (THIRD FLOOR) - 3,013 SQ. FT.

THE RESIDENCES
AT GRIGGS PARK



75-77 GRIGGS ROAD, BROOKLINE
REAR ELEVATION

JUNE 1, 2020

DAI
1/8" = 1'-0"

UNIT #1 (SECOND FLOOR) - 3,013 SQ. FT.

UNIT #2 (THIRD FLOOR) - 3,013 SQ. FT.

THE RESIDENCES
AT GRIGGS PARK



75-77 GRIGGS ROAD, BROOKLINE
RIGHT SIDE ELEVATION

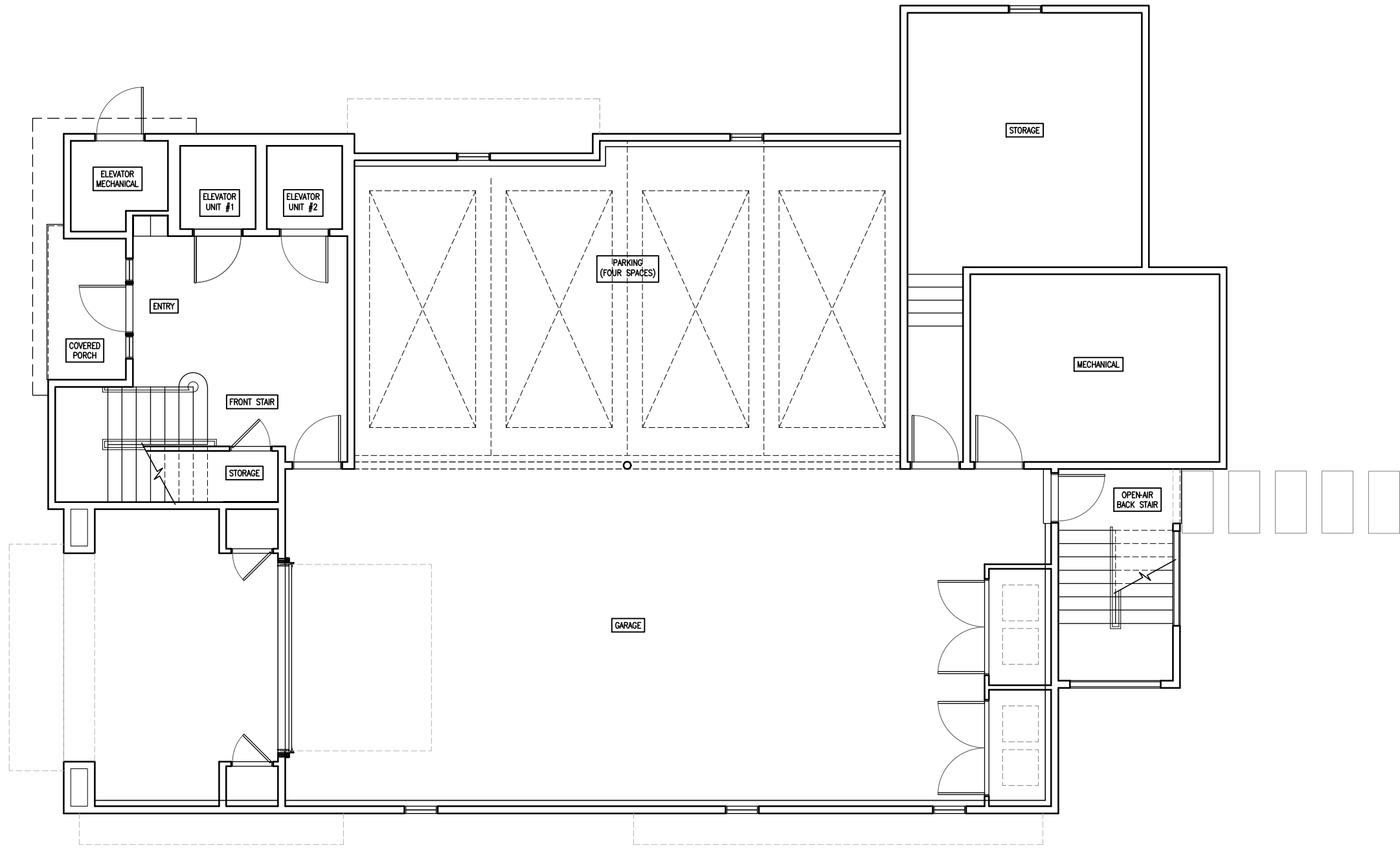
JUNE 1, 2020

DAI
1/8" = 1'-0"

UNIT #1 (SECOND FLOOR) - 3,013 SQ. FT.

UNIT #2 (THIRD FLOOR) - 3,013 SQ. FT.

THE RESIDENCES
AT GRIGGS PARK

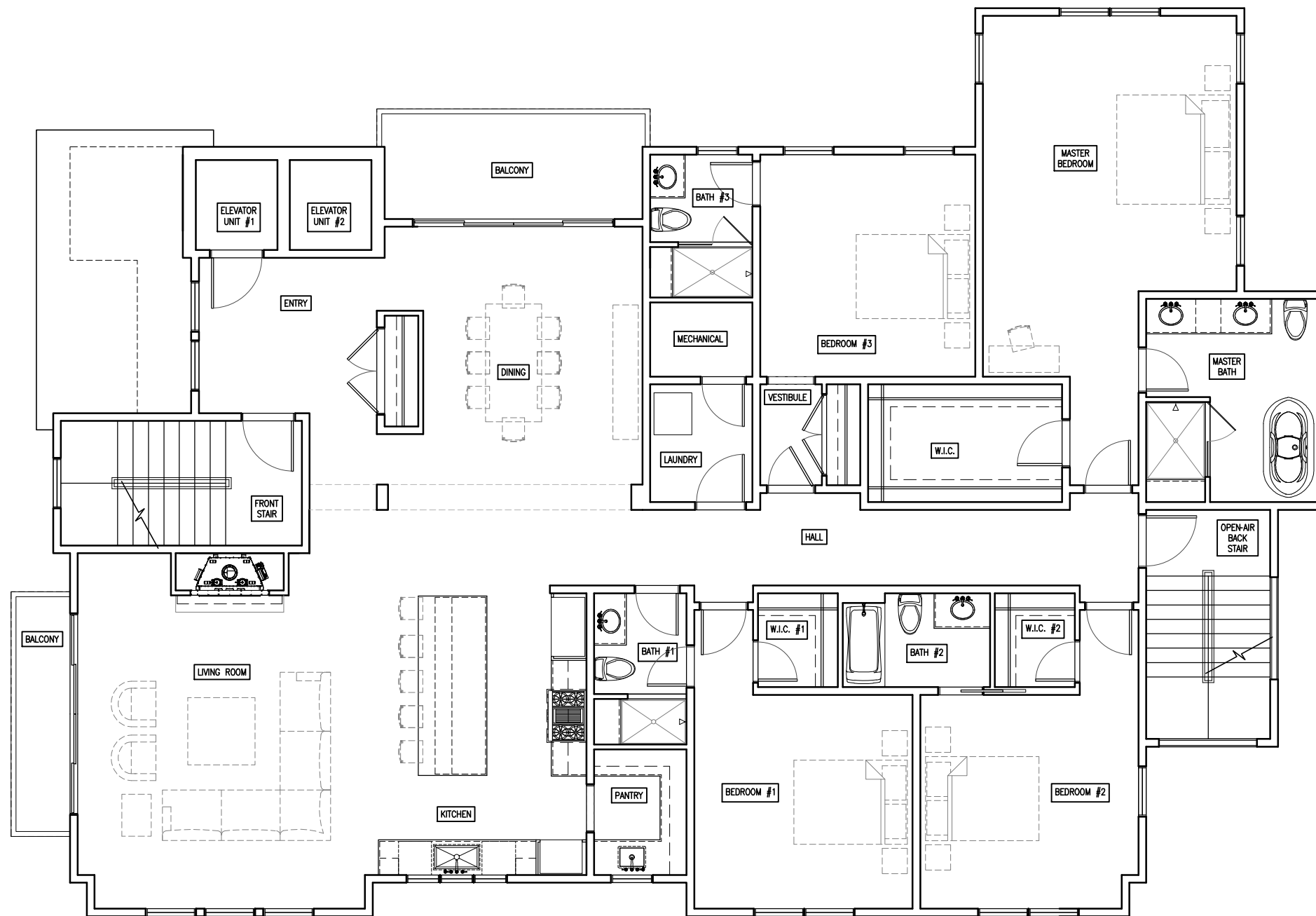


75-77 GRIGGS ROAD, BROOKLINE
 GROUND LEVEL PLAN
 JUNE 1, 2020

DAI
 1/8" = 1'-0"

UNIT #1 (SECOND FLOOR) - 3,013 SQ. FT.
 UNIT #2 (THIRD FLOOR) - 3,013 SQ. FT.



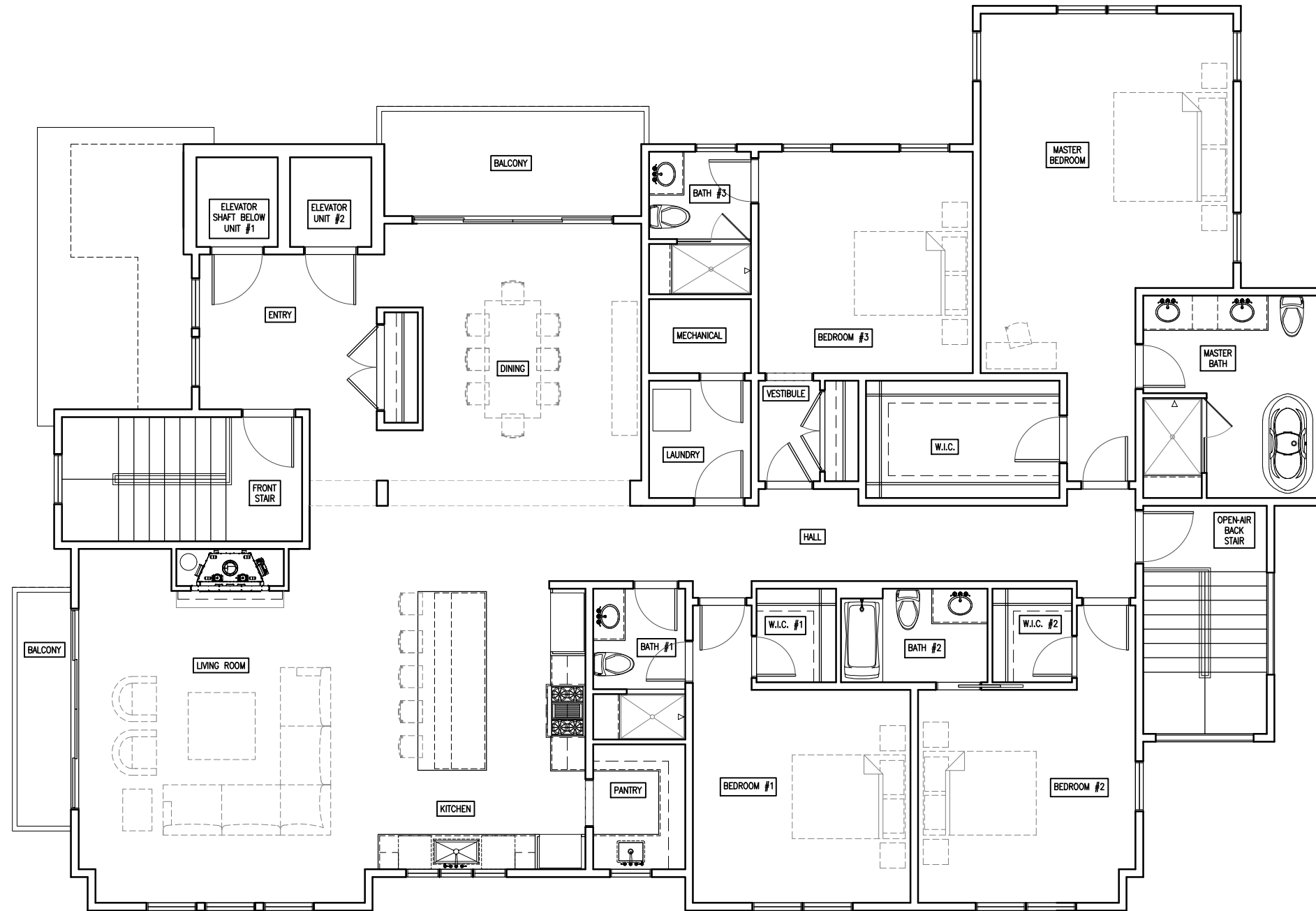


75-77 GRIGGS ROAD, BROOKLINE
 UNIT #1 PLAN (SECOND FLOOR)
 JUNE 1, 2020

DAI
 1/8" = 1'-0"

UNIT #1 (SECOND FLOOR) - 3,013 SQ. FT.

THE RESIDENCES
AT GRIGGS PARK



75-77 GRIGGS ROAD, BROOKLINE
 UNIT #2 PLAN (THIRD FLOOR)

JUNE 1, 2020

DAI
 1/8" = 1'-0"

UNIT #2 (THIRD FLOOR) - 3,013 SQ. FT.

THE RESIDENCES
AT GRIGGS PARK